

# Product Ordering Information

## *R-Type® Reversing with C-Tips\**

| BELT WIDTH |      | ORDERING NUMBER | ITEM CODE | WT. LBS. |
|------------|------|-----------------|-----------|----------|
| in.        | mm   |                 |           |          |
| 18         | 450  | RC18            | 74618     | 72.8     |
| 24         | 600  | RC24            | 74619     | 79.3     |
| 30         | 750  | RC30            | 74620     | 85.2     |
| 36         | 900  | RC36            | 74621     | 91.9     |
| 42         | 1050 | RC42            | 74622     | 104.9    |
| 48         | 1200 | RC48            | 74623     | 113.5    |
| 54         | 1350 | RC54            | 74624     | 121.1    |
| 60         | 1500 | RC60            | 74625     | 129.8    |
| 72         | 1800 | RC72            | 74626     | 141.1    |

\*NOTE: C-Tips can be used on mechanically spliced and vulcanized belts.

Lead time: 1 working day

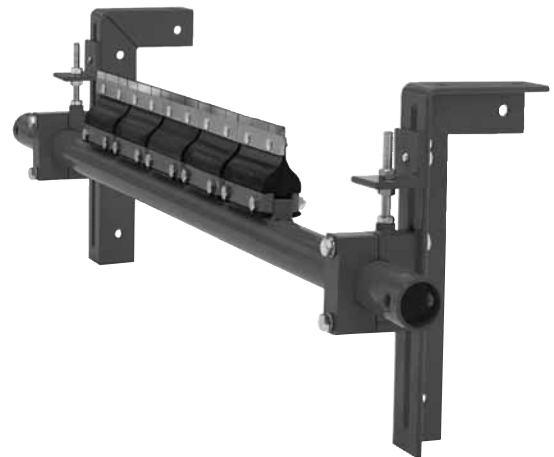


## *R-Type® Reversing with V-Tips\**

| BELT WIDTH |      | ORDERING NUMBER | ITEM CODE | WT. LBS. |
|------------|------|-----------------|-----------|----------|
| in.        | mm   |                 |           |          |
| 18         | 450  | RV18            | 74633     | 72.4     |
| 24         | 600  | RV24            | 74634     | 78.7     |
| 30         | 750  | RV30            | 74635     | 84.6     |
| 36         | 900  | RV36            | 74636     | 91.1     |
| 42         | 1050 | RV42            | 74637     | 104.0    |
| 48         | 1200 | RV48            | 74638     | 113.3    |
| 54         | 1350 | RV54            | 74639     | 119.9    |
| 60         | 1500 | RV60            | 74640     | 128.5    |
| 72         | 1800 | RV72            | 74641     | 139.7    |

\*NOTE: V-Tips can be used ONLY on vulcanized belts.

Lead time: 1 working day



## *Replacement Tips*

| ORDERING NUMBER | ITEM CODE | WT. LBS. |
|-----------------|-----------|----------|
| ICT6            | 74535     | 0.7      |
| RVT6            | 74646     | 1.3      |

Lead time: 1 working day

## *Tips Required per Cleaner Size*

| in.                       | 18  | 24  | 30  | 36  | 42   | 48   | 54   | 60   | 72   |
|---------------------------|-----|-----|-----|-----|------|------|------|------|------|
| mm                        | 450 | 600 | 750 | 900 | 1050 | 1200 | 1350 | 1500 | 1800 |
| C-Tips or V-Tips Required | 3   | 4   | 5   | 6   | 7    | 8    | 9    | 10   | 12   |

## *Product Notes:*

- Two-way cushions allow cleaning in both directions.
- Tungsten carbide tips for long wear and superior cleaning.

**Eliminator®**  
BELT CLEANING SYSTEMS