

F A S T E R . E A S I E R . S T R O N G E R .
S M A R T E R .



***Belt Fastener Solutions for
Round Hay Baling***

“Repairing belts in the field with Flexco fasteners
reduces lost harvesting time
and that saves me money.”



SMARTER.

Once you start baling you can't afford to stop. Downtime associated with maintenance and repairs can be costly. Flexco mechanical belt fasteners reduce in-field installation time, providing a sturdy, dependable splice that gets you up and running fast.

www.flexco.com



Choosing the right for your ne



Alligator® Rivet Fastener System

Recommended System for:

- Larger Bales
- Long Splice Life
- Wet Conditions
- Simple Tooling
- High Strength Splice
- On-Site Installation

Fastener Advantages

- The Alligator® Rivet fastener is a sturdy plate fastener design that delivers a long-lasting, abrasion resistant splice.
- Self-setting rivets accommodate belts from 1/8 to 7/32" (3.2-5.6mm) thick and pulleys as small as 3 1/2" (88mm).
- All components of the splice, fasteners, rivets and pin, are made from stainless steel.



Installation Tool

- The Alligator Rivet Installation Tool (ART) is easy-to-use, only requiring a hammer for on-site field installation. Special pilot nail and rivet assembly are hammered through the belt and the rivet is formed/peened in the base of the tool.
- The Multiple Alligator Rivet Installation Tool (MART) is the ideal choice for dealers or farm supply stores who are installing a number of splices. The impact resistant guide block, in combination with the tool base, allows for the rivets to be set with a medium stroke air hammer or hand punch. This not only speeds installation, but also reduces operator fatigue.



Accessory tools to the job done



The 14" (350mm) Belt Cutter is portable and easily cuts belts up to 14" (350mm) wide and 3/8" (9.5mm) thick. It features a belt-squaring arm to achieve straight cuts. The cutter top beam can easily be opened to insert a section of long belt.



The R
provid
rough
duty
minim

g the right splice
your needs.



Clipper® 4-1/2 RHTX Baler Fastener

Recommended system for:

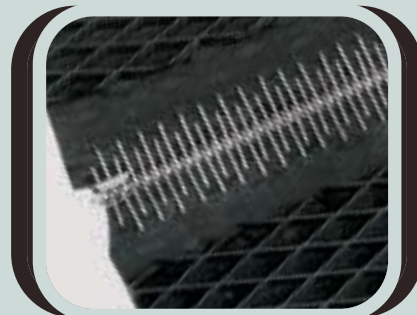
- Smaller Balers
- Dry Conditions
- Older Balers
- Tight Clearance within Baler
- Users with Existing Installation Tools
- Lower Splice Cost

Fastener Advantages

- Clipper® 4-1/2 RHTX fasteners are made of a rectangular shaped high tensile wire designed for maximum abrasion resistance and overall strength.

Installation Tools

- The Clipper Vice Lacer is economical and ideal for low-volume users. Fits in any shop vise for easy installation.
- The Clipper Baler Belt Lacer is a portable lacer for field installation of Clipper splices.



tools to help get
b done right.



The Rough-Top Belt Skiver provides the quick, clean removal of rough top from light or medium duty conveyor belting to help minimize splice profile.



The RB-1 Belt Grinder removes the top cover or rough top from a belt before installing fasteners. The grinder cuts rather than burns, leaving no gummy residue.

Flexco Advantage:

Repairs and maintenance to your baler belts can be costly, whether you're measuring in lost harvesting time or dollars. Flexco belt fastener systems create sturdy splices that are easy to install. That means long-term peace of mind and savings.

Faster.

- Flexco simplifies routine baler belt maintenance and repairs with mechanical fastener systems that can be installed on-site, in the field, in minutes rather than hours.
- Belt splice repairs can be made using simple-to-use installation tools and a hammer.



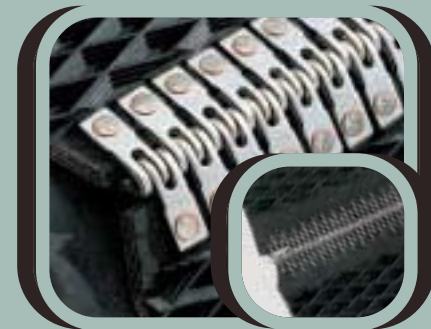
Easier.

- Flexco mechanical fasteners allow you to make repairs without having to remove the belts from the baler.
- Installation tools are designed for simple procedures requiring only basic mechanical skills.



Stronger.

- Material selection and design elements of the fasteners are optimized to provide maximum strength and abrasion resistance for the abusive baling application.



◀ Flexco FACTS

Flexco offers a variety of agricultural belt fastener systems, so you can select the one best suited for your needs. Additional selection information can be easily accessed at www.flexco.com.

FLEXCO

- *Less downtime*
- *Easier to install*
- *Greater safety*
- *Reduced maintenance costs*
- *Increased productivity*

F A S T E R . E A S I E R . S T R O N G E R .
S M A R T E R .



Authorized Distributor

www.flexco.com

FLEXIBLE STEEL LACING COMPANY
2525 Wisconsin Avenue, Downers Grove, Illinois 60515
phone: 630-971-0150 fax: 630-971-1180 e-mail: info@flexco.com



Australia: 61-2-9680-3322 • England: 44-1274-600-942 • Germany: 49-7428-9406-0
Mexico: 52 55 56-74-53-26 • Republic of South Africa: 27-11-608-4180

© 2007 Flexible Steel Lacing Company 5/07-3.5, Part #X2072
Alligator® and Clipper®, are registered trademarks of Flexible Steel Lacing Company.