

The Reliable and Economical Solution for Belt Slippage

Flex-Lag has been developed in multiple styles including Light-Duty, Plain-Pattern, Diamond-Pattern Rubber and Diamond-Pattern Ceramic to meet any application. Its design allows for installation in a fraction of the time compared to conventional lagging because Flex-Lag does not require removing the pulley from the conveyor system. A labor-saving cold vulcanization process makes on-site installation fast, simple and efficient.

Light-Duty



- Specially designed for pulleys with diameters as small as 2" (50mm).
- Moisture is channeled between small raised buttons that support and grip the belt and deliver superior traction.

Plain-Pattern



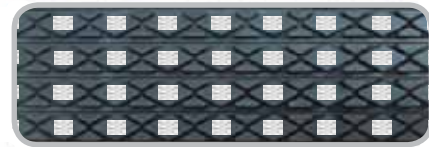
- Helps prevent belt slippage in extremely dirty environments.
- Rubber flexes during use to shed excess materials and prevent material build-up as well as premature belt and pulley wear.
- Horizontal grooves trap and deflect water, resulting in a coefficient of friction superior to plain-sheet lagging.

Diamond-Pattern Rubber



- Constructed from high durometer rubber for abrasion resistance.
- Diamond pattern is based on rain tire treading designs for superior water-shedding characteristics.
- Helps keep belt slippage to the absolute minimum.

Diamond-Pattern Ceramic



- Large ceramic tile is molded into the diamond section, providing an increased coefficient of friction.
- Diamond pattern is based on rain tire tread designs for superior water-shedding characteristics.
- Uses the advantages of a ceramic product at a more affordable cost.

Features and Benefits

- **Easy to use.** The in situ installation of Flex-Lag eliminates the need to remove the pulley from the conveyor system, meaning less conveyor downtime.
- **Works on a Range of Pulleys.** Because these come in rolls 8" wide (200mm) and lengths of 10.8 ft. (3.3M) for Light-Duty and 21ft. (6.5M) for Plain-Pattern and Diamond-Pattern solutions, virtually any pulley dimensions can utilize Flex-Lag. See step-by-step instructions and Strip Selection Guide to apply.
- **Available with FRAS approved rubber.** The Flex-Lag Plain Pattern, Diamond-Pattern Rubber and Diamond-Pattern Ceramic are available in both natural rubber and FRAS (Fire Resistant Anti Static) rubber.

Specifications and Guidelines

- **Temperature Rating**
5°F to 185° F (-15° C to 85° C)
- **FRAS (Fire Resistant Anti Static) MSHA Certification # - MSHA NO. IC-190**
Available (see below)

Step-by-Step selection instructions

Step 1: Measure the diameter of your pulley.

Step 2: See Strip Selection Chart to determine the number of strips you will need to lay lengthwise across the pulley.

Step 3: Choose the material and pattern best suited to your application.

Step 4: Determine the number of rolls required to cover pulley face:

- Determine Length of Strip-
For Light-Duty and Plain-Pattern Lagging: Pulley face plus 2" (50mm)
For Diamond-Pattern Lagging: Pulley face plus 4" (100mm)
- Calculate Strips per Roll-
For Light-Duty Lagging: 129" (3.3M) ÷ length of strip

For Diamond-Pattern and Plain-Pattern Lagging:
252" (6.5M) ÷ length of strip
- Number of Rolls Required-
Number of strips required ÷ strips per roll

Coefficients of Friction		
Condition	Flex-Lag Grooved Rubber	Flex-Lag Diamond Ceramic
Dry	0.74 to 0.83	0.46 to 0.56
Wet	0.48 to 0.78	0.28 to 0.36
Wet with Mud	0.42 to 0.51	0.23 to 0.27

Pressure on surface 3kg/cm (2) V = 0M/min.

NOTE: A dry, bare steel or iron pulley has a coefficient of friction approximately 2.25.

NOTE: When specifying Diamond Ceramic for a drive application, care should be taken not to exceed relevant coefficient of friction ranges.

Strip Selection					
Pulley Diameter		Strips Required	Pulley Diameter		Strips Required
in.	mm		in.	mm	
12.6-15.0	320-381	6	42.6-45.0	1083-1145	18
15.1-17.5	382-445	7	45.1-47.5	1146-1210	19
17.6-20.0	446-510	8	47.6-50.1	1211-1273	20
20.1-22.5	511-573	9	50.2-52.6	1274-1336	21
22.6-25.0	574-636	10	52.7-55.1	1337-1400	22
25.1-27.5	637-700	11	55.2-57.6	1403-1463	23
27.6-30.0	701-764	12	57.7-60.1	1466-1527	24
30.1-32.5	765-827	13	60.2-62.6	1529-1590	25
32.6-35.0	828-891	14	62.7-65.1	1593-1654	26
35.1-37.5	892-955	15	65.2-67.6	1656-1717	27
37.6-40.0	956-1018	16	67.7-70.1	1720-1781	28
40.1-42.5	1019-1082	17	70.2-72.6	1783-1844	29

Ordering Information

Flex-Lag Ceramic Natural Rubber			
Pattern	Thickness Inches (mm)	Ordering Number	Item Code
Diamond Ceramic	15/32 (12)	12NDC	71155
Diamond	13/32 (10)	10ND	71002
	15/32 (12)	12ND	71113
	19/32 (15)	12ND	71115
	25/32 (20)	20ND	71116
	1 (25)	25ND	71039
Plain	13/32 (10)	10NP	71126
	15/32 (12)	12NP	71127
	25/32 (20)	20NP	71042
	1 (25)	25NP	71129

Flex-Lag Flame-Resistant Rubber			
Pattern	Thickness Inches (mm)	Ordering Number	Item Code
Diamond Ceramic	15/32 (12)	12FRDC	71159
Diamond	13/32 (10)	10FRD	71014
	15/32 (12)	12FRD	71016
	19/32 (15)	15FRD	71018
	25/32 (20)	20FRD	71019
	13/32 (10)	10FRP	71020
Plain	15/32 (12)	12FRD	71022

Flex-Lag Light Duty Rubber		
Description	Ordering Number	Item Code
Black (SBR)	6BLD	71077



2525 Wisconsin Avenue • Downers Grove, IL 60515-4200 U.S.A.
Tel: (630)-971-0150 • Fax: (630)-971-1180 • E-mail: info@flexco.com • Web: www.flexco.com

Australia: 61-2-9680-3322 • China: 86-21-33528388 • England: 44-1274-600-942
Germany: 49-7428-9406-0 • Mexico: 52-55-5674-5326 • South Africa: 27-11-608-4180

Authorized Distributor:

